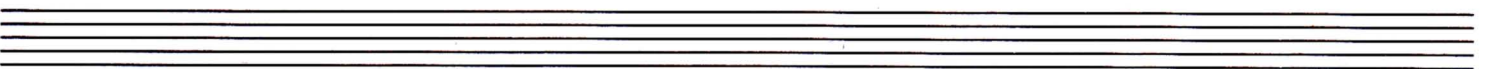
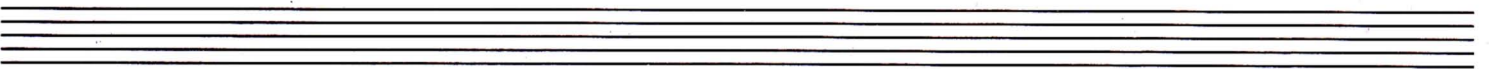
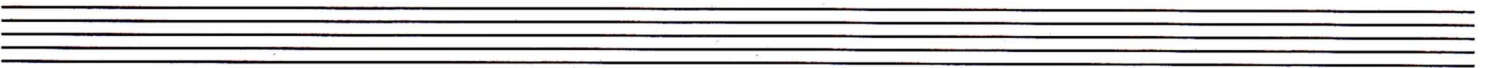
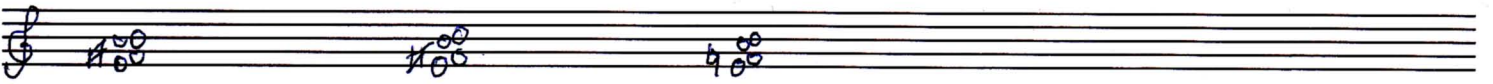
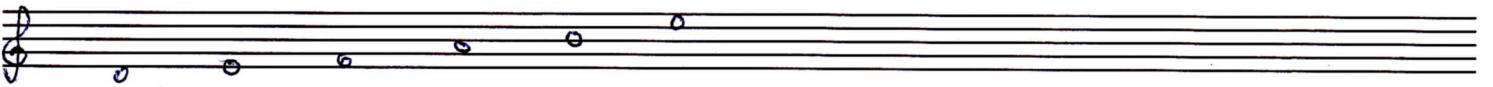
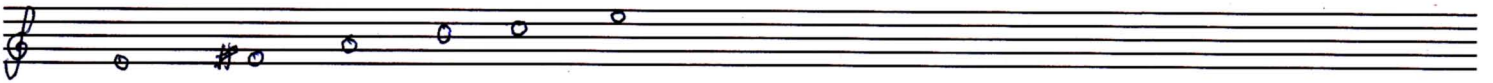
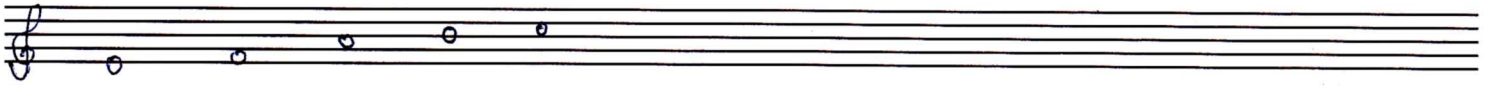
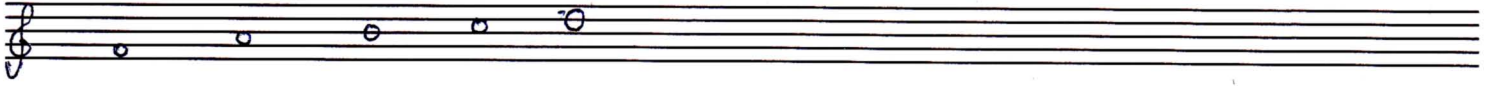
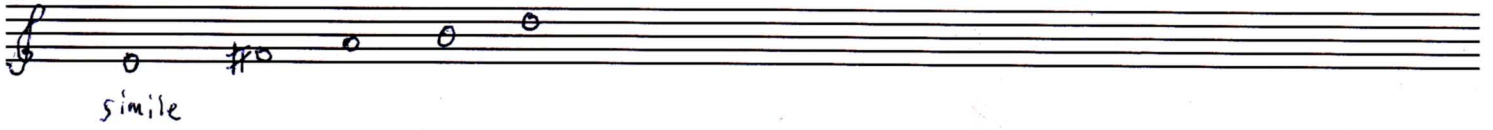
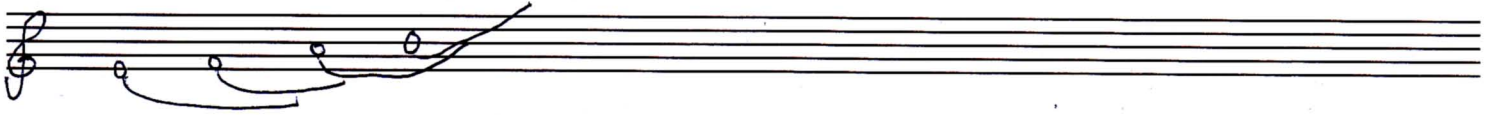


May 24th

2



May 24<sup>th</sup>

3

Handwritten musical notation on ten staves. The first staff has a large scribble on the left. The notation consists of eighth notes with stems, some beamed together, and various accidentals (sharps, flats, naturals) above the notes. The notes are mostly in the middle range of the staves.

Four empty musical staves at the bottom of the page.

May 24<sup>th</sup>

4

Handwritten musical notation for the first system. It consists of two staves: a treble staff on top and a bass staff on the bottom. The treble staff contains a sequence of notes: G4, A4, B4, C5, B4, A4, G4, F4, E4, D4, C4. The bass staff contains two notes: G2 and C3. A large curly brace on the left side groups both staves together. A small '1' is written above the treble staff.

Handwritten musical notation for the second system. It consists of two staves: a treble staff on top and a bass staff on the bottom. The treble staff contains a sequence of notes: G4, A4, B4, C5, B4, A4, G4, F4, E4, D4, C4. The bass staff contains two notes: G2 and C3. A large curly brace on the left side groups both staves together. A small '1' is written above the treble staff.

Handwritten musical notation for the third system. It consists of two staves: a treble staff on top and a bass staff on the bottom. The treble staff contains a sequence of notes: G4, A4, B4, C5, B4, A4, G4, F4, E4, D4, C4. The bass staff contains two notes: G2 and C3. A large curly brace on the left side groups both staves together. A small '1' is written above the treble staff.

Handwritten musical notation for the fourth system. It consists of two staves: a treble staff on top and a bass staff on the bottom. The treble staff contains a sequence of notes: G4, A4, B4, C5, B4, A4, G4, F4, E4, D4, C4. The bass staff contains two notes: G2 and C3. A large curly brace on the left side groups both staves together. A small '1' is written above the treble staff.

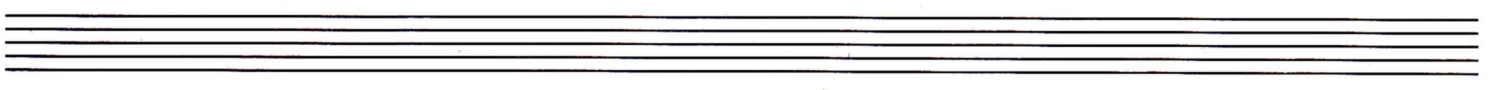
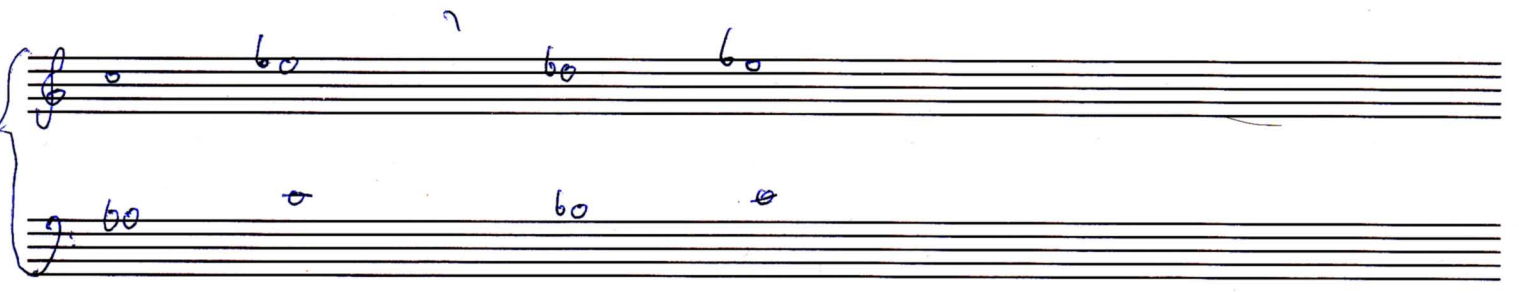
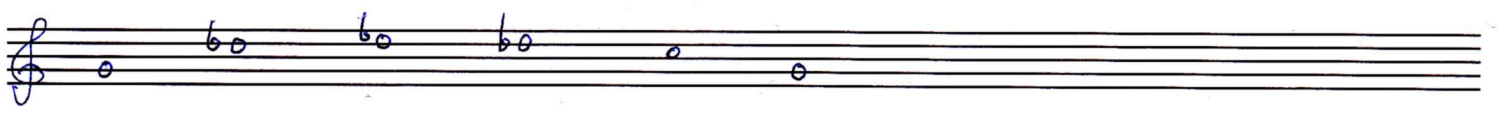
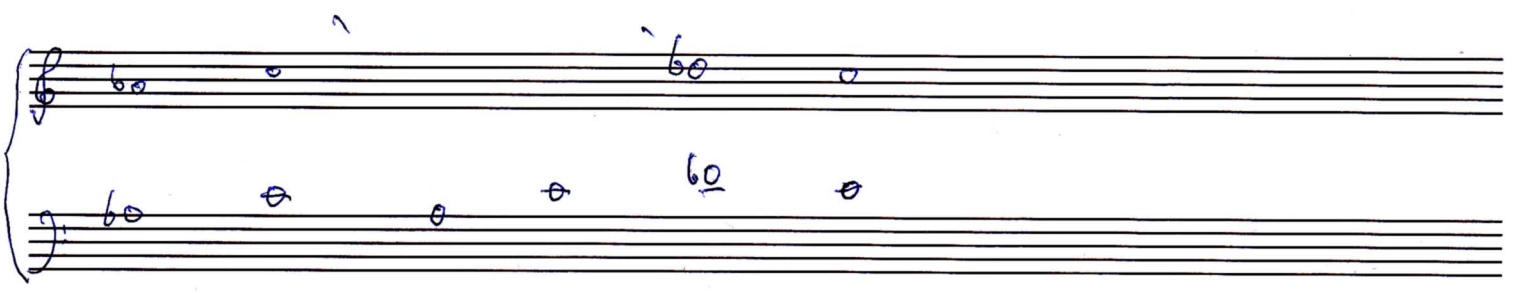
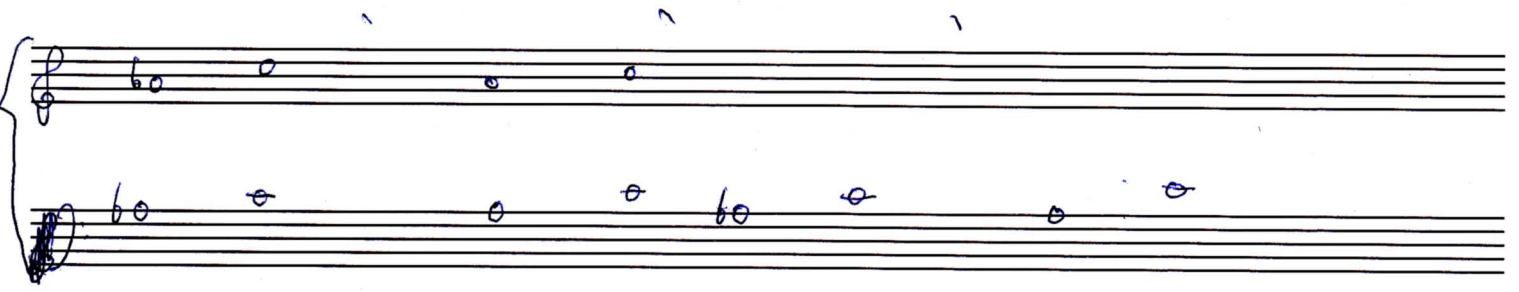
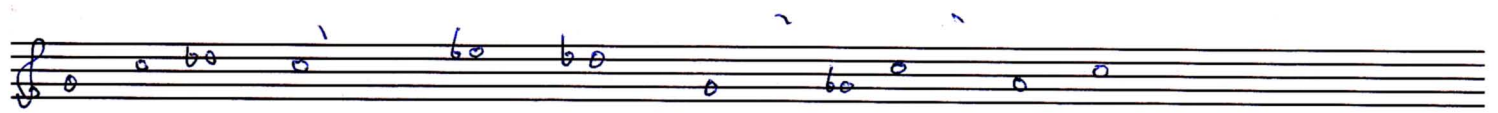
Handwritten musical notation for the fifth system. It consists of two staves: a treble staff on top and a bass staff on the bottom. The treble staff contains a sequence of notes: G4, A4, B4, C5, B4, A4, G4, F4, E4, D4, C4. The bass staff contains two notes: G2 and C3. A large curly brace on the left side groups both staves together. A small '1' is written above the treble staff.

Handwritten musical notation for the sixth system. It consists of two staves: a treble staff on top and a bass staff on the bottom. The treble staff contains a sequence of notes: G4, A4, B4, C5, B4, A4, G4, F4, E4, D4, C4. The bass staff contains two notes: G2 and C3. A large curly brace on the left side groups both staves together. A small '1' is written above the treble staff. The system ends with a double bar line and a scribble on the right side.



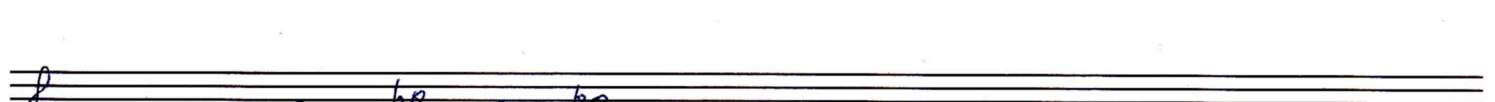
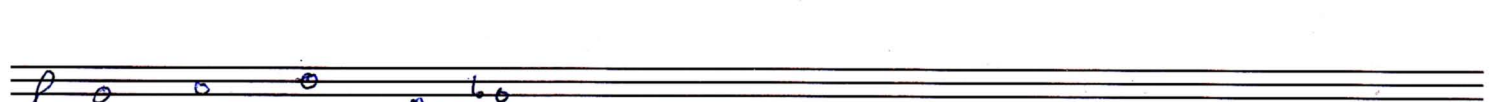
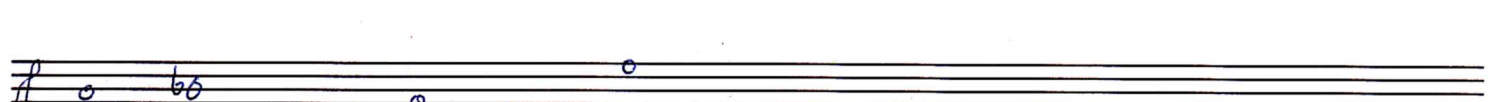
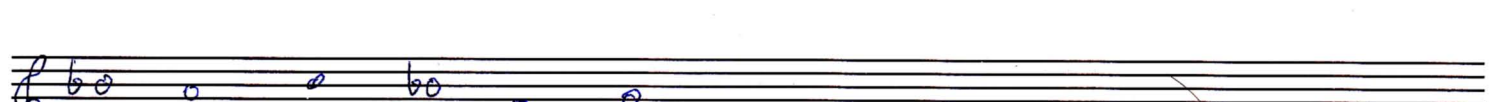
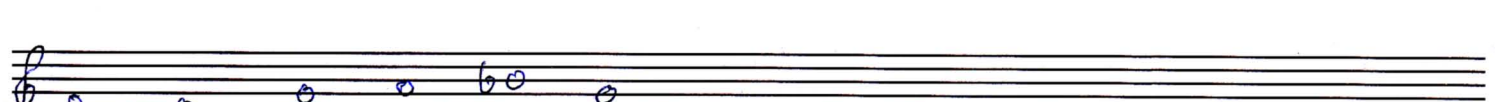
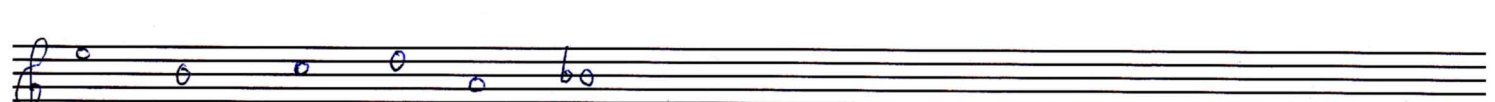
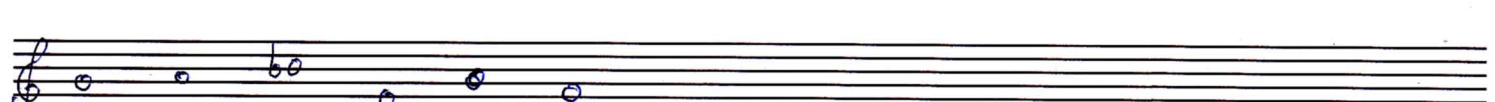
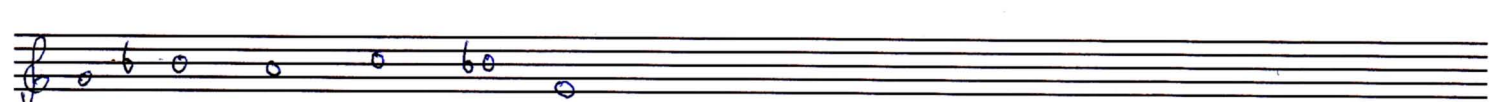
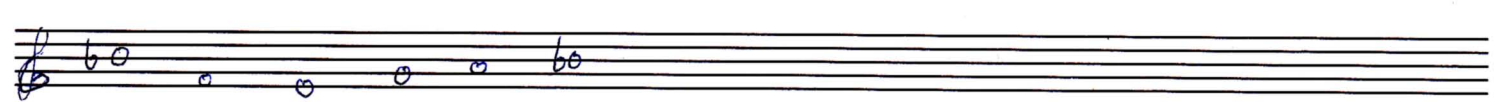
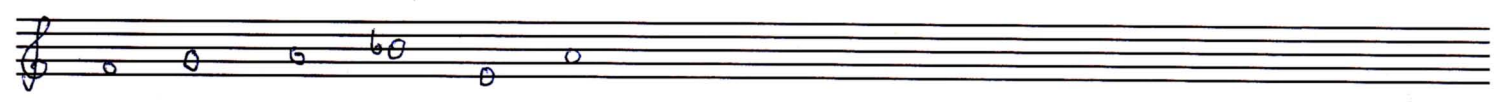
May 24<sup>th</sup>

5



May 24<sup>th</sup>

6



May 24<sup>th</sup>

7

May 24<sup>th</sup>

8

Handwritten musical notation on a five-line staff. It begins with a bass clef. The first measure contains two chords. The second measure contains a single chord. The third measure contains a single chord with the label '600' written above it.

Handwritten musical notation on a five-line staff. It begins with a bass clef. The first measure contains a chord with the label '60' written below it. The second measure contains a single chord. The third measure contains a single chord. The fourth measure contains a single chord with the label '60' written above it.

Handwritten musical notation on a five-line staff. It begins with a bass clef. The first measure contains a chord. The second measure contains a chord. The third measure contains a chord with a sharp sign above it. The fourth measure contains a chord with a sharp sign above it.

Handwritten musical notation on a five-line staff. It begins with a bass clef. The first measure contains a chord. The second measure contains a chord. The third measure contains a chord.

Handwritten musical notation on a five-line staff. It begins with a bass clef. The first measure contains a chord. The second measure contains a chord. The third measure contains a chord. The fourth measure contains a chord with a sharp sign above it.

Handwritten musical notation on a five-line staff. It begins with a bass clef. The first measure contains a chord with the label '60' written below it. The second measure contains a chord. The third measure contains a chord. The fourth measure contains a chord with a sharp sign above it.

Handwritten musical notation on a five-line staff. It begins with a bass clef. The first measure contains a chord. The second measure contains a chord with a sharp sign above it. The third measure contains a chord with a sharp sign above it. The fourth measure contains a chord.

Handwritten musical notation on a five-line staff. It begins with a bass clef. The first measure contains a chord with the label '600' written below it. The second measure contains a chord. The third measure contains a chord with the label '60' written above it. The fourth measure contains a chord with the label '600' written above it. The fifth measure contains a chord.

Handwritten musical notation on a five-line staff. It begins with a bass clef. The first measure contains a chord. The second measure contains a chord with a sharp sign above it. The third measure contains a chord with a sharp sign above it. The fourth measure contains a chord with the label '60' written above it. The fifth measure contains a chord with the label '600' written above it.

Handwritten musical notation on a five-line staff. It begins with a bass clef. The first measure contains a chord with the label '600' written below it. The second measure contains a chord. The third measure contains a chord. The fourth measure contains a chord with a sharp sign above it.

Handwritten musical notation on a five-line staff. It begins with a bass clef. The first measure contains a chord with the label '60' written below it. The second measure contains a chord. The third measure contains a chord. The fourth measure contains a chord.



May 24<sup>th</sup>

9

Handwritten musical notation on eight staves. The notation consists of circles representing notes, some with accidentals (sharps, naturals, flats) and some with stems. The notes are arranged in a sequence across the staves, with some notes having additional markings above them, possibly indicating fingerings or dynamics. The notation is written in a simple, sketchy style.

Four empty musical staves, each consisting of five horizontal lines, arranged vertically. They are completely blank and contain no notation.

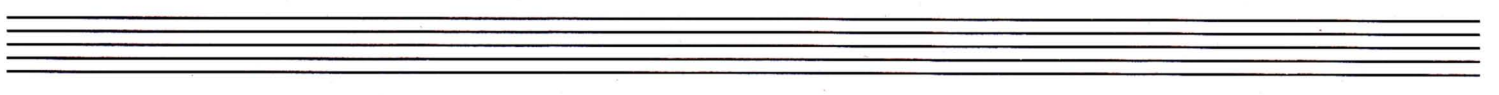
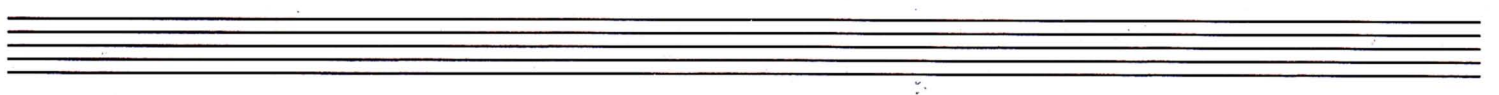
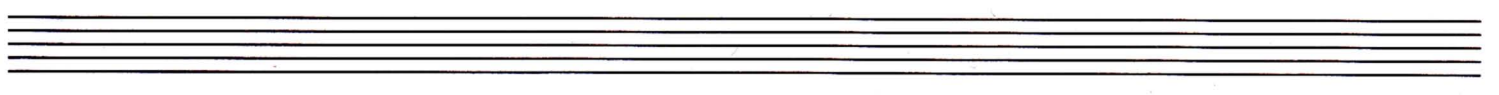
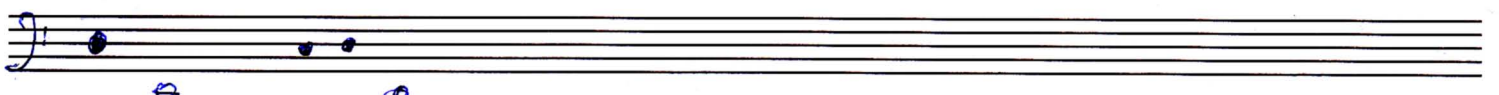
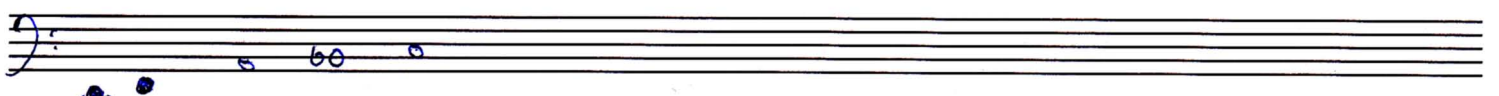
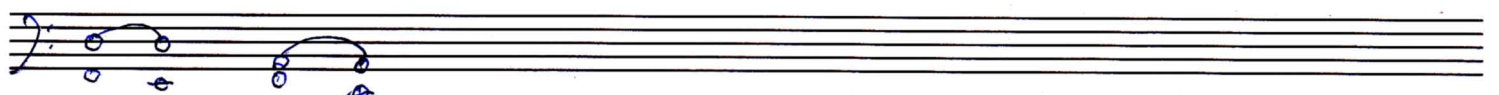
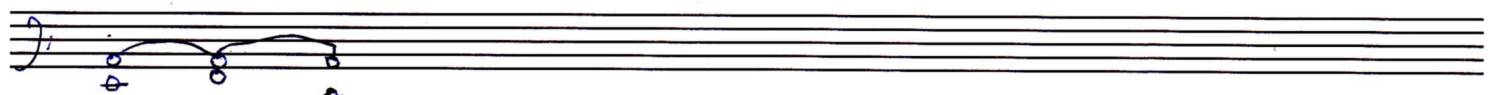
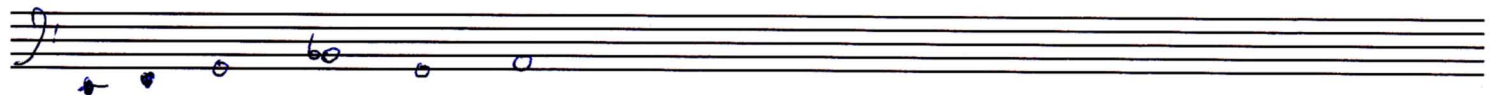
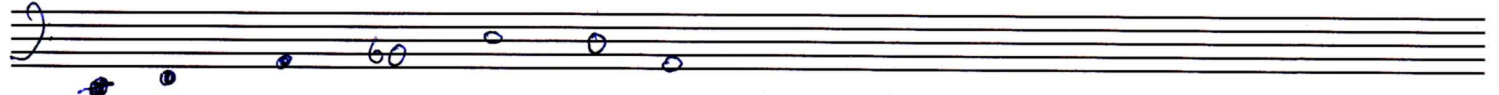
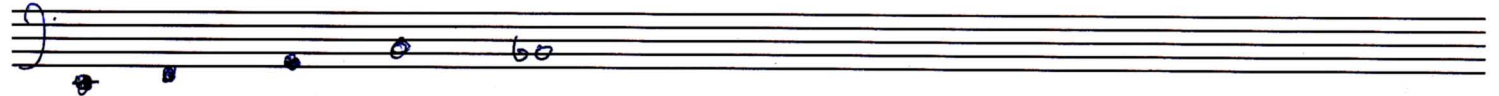
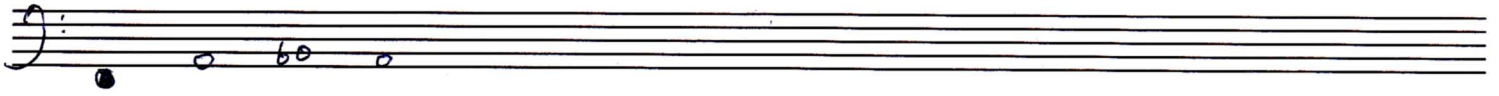
May 24<sup>th</sup>

10

The image shows a handwritten musical score on ten staves. The notation is in treble clef and consists of various chords and notes. The first staff has three chords: a triad of G4, B4, and D5; a dyad of G4 and B4; and a dyad of G4 and B4 with a sharp sign above the G. The second staff has four chords: a triad of G4, B4, and D5; a dyad of G4 and B4; a dyad of G4 and B4; and a dyad of G4 and B4 with a sharp sign above the G. The third staff has three chords: a triad of G4, B4, and D5; a dyad of G4 and B4; and a dyad of G4 and B4 with a sharp sign above the G. The fourth staff has three chords: a triad of G4, B4, and D5; a dyad of G4 and B4; and a dyad of G4 and B4 with a sharp sign above the G. The fifth staff has four chords: a triad of G4, B4, and D5; a dyad of G4 and B4; a dyad of G4 and B4 with a sharp sign above the G; and a dyad of G4 and B4 with a sharp sign above the G. The sixth staff has three chords: a triad of G4, B4, and D5; a dyad of G4 and B4; and a dyad of G4 and B4 with a sharp sign above the G. The seventh staff has four chords: a triad of G4, B4, and D5; a dyad of G4 and B4; a dyad of G4 and B4 with a sharp sign above the G; and a dyad of G4 and B4 with a sharp sign above the G. The eighth staff has three chords: a triad of G4, B4, and D5; a dyad of G4 and B4; and a dyad of G4 and B4 with a sharp sign above the G. The ninth staff has two chords: a triad of G4, B4, and D5; and a dyad of G4 and B4 with a sharp sign above the G. The tenth staff is heavily scribbled out with black ink. There are some handwritten annotations in blue ink, including a circled 'C' above the second staff and a circled 'C' below the ninth staff.

May 24<sup>th</sup>

||



May 24<sup>th</sup>

12

Handwritten musical notation on a grand staff. The treble clef staff contains five notes: G4, A4, B4, C5, and D5. The bass clef staff contains five notes: G3, A3, B3, C4, and D4.

Handwritten musical notation on a grand staff. The treble clef staff contains six notes: G4, A4, B4, C5, D5, and E5. The bass clef staff contains six notes: G3, A3, B3, C4, D4, and E4.

Handwritten musical notation on a grand staff. The treble clef staff contains eight notes: G4, A4, B4, C5, D5, E5, F5, and G5. The bass clef staff contains eight notes: G3, A3, B3, C4, D4, E4, F4, and G4.

Handwritten musical notation on a grand staff. The treble clef staff contains six notes: G4, A4, B4, C5, D5, and E5. The bass clef staff contains six notes: G3, A3, B3, C4, D4, and E4.

Handwritten musical notation on a grand staff. The treble clef staff contains three notes: G4, A4, and B4. The bass clef staff contains three notes: G3, A3, and B3.

Handwritten musical notation on a grand staff. The treble clef staff contains two notes: G4 and A4. The bass clef staff contains two notes: G3 and A3. The system concludes with a double bar line.